



IT'S THE FINAL COUNTDOWN

**LOCKDOWN WEEK 10**

# HAPPY WEEK 10

- Sing, dance and exercise like no-one is watching.
- Drink lots of water to clear your mind and body.
- Take risks with your school work and ask for help
- If you need it.
- Enjoy this week at home or school as next week is HOLIDAYS!
- TAKE CARE AND I MISS YOU ALL.  
Whaea Nettie

# LIST OF ACTIVITIES AND LEARNING

On the menu this week we will have

- Art and craft
- Writing
- Science
- Reading
- Maths
- Fun
- Music and Movement



# PUT ON THE MUSIC AND DANCE DANCE DANCE....

THIS IS THE 'GO NOODLE' APP, THAT A WHANAU MEMBER CAN ADD TO THEIR PHONE OR THE COMPUTER

<https://apps.apple.com/us/app/gonoodle-kids-videos/id1050712293>

THIS IS THE 'GO NOODLE LINK:

<https://www.youtube.com/channel/UC2YBT7HYqCbbvzu3kKZ3wnw>

Get up with your whanau and get moving. When I was a little girl, I used to create moves with my cousin Adele and then we'd show our whanau our dance routine. You could have a lot of fun and exercise doing this with your whanau too, choose your movement and then off you go!



# MAKING A PAPER BOAT

Click on the following link and you can make your paper boat. It is similar to making paper hat. When you've finished you can test it in the bath! Ask your parents first!

<https://www.youtube.com/watch?v=1wu5oKy4m5s>



# MUSIC



SHINE LIKE A DIAMOND

<https://www.youtube.com/watch?v=fleKy8mD-1k>

JUNGLE

<https://www.youtube.com/watch?v=CevxZvSJLk8&list=PLWLIkFICHOB5Amt6T7IPawzxX4WNNyH4N>

COOL SONGS TO DANCE TO- SAVAGE LOVE

<https://www.youtube.com/watch?v=ul6zz2R3rAY>

# SHAVING FOAM ART

**How to create shaving foam paintings**

**Here's a link to help you on your way.**

**<https://www.youtube.com/watch?v=65e5hKRPEnA>**

- Fill your container with shaving cream and add a few drops of food colouring. You may like to try a few different colours in the one container.
- Get messy! ...
- Pat down on the shaving cream with your blank piece of paper. ...
- Once dry, cut your picture to the size of your frame.

Remember to ask dad if it's okay to use his shaving foam or ask to have the budget shaving foam when they do the shopping.

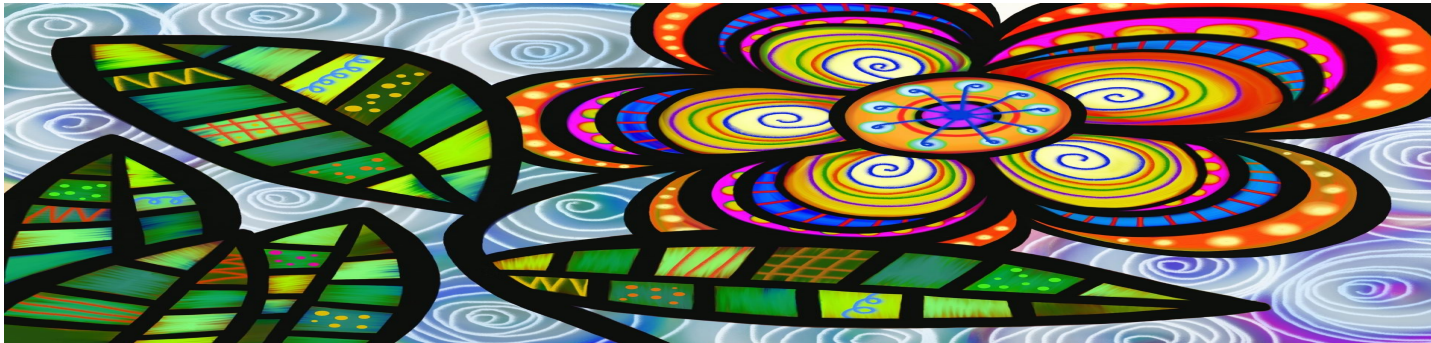


# SHAVING FOAM ART

Please do this activity outside on a fine day.

Wear old clothes, incase you get food colouring on them.

Ask your caregiver's if you can play with your shaving foam, after you've made your pictures. It feels really nice.





# VAN GOGH'S STARRY NIGHT ...your inspiration



If back at school you can do this art activity.....

## **VAN GOGH ART PROJECT**

**MATERIALS:**<https://thecraftyclassroom.com/crafts/famous-artist-crafts-for-kids/van-gogh-art-project/>

- Black Paper
- White School Glue
- Oil Pastels
- Using your white glue, begin to draw the dark shape at the front of your paper. . This will outline the main tree and the village in the distance. Look at the picture on your computer for Van Gogh's Starry Night painting while you draw.



## WHAT TO DO.....

Add in your horizon line, where the sky meets the land, showing the hills and the village below. Use simple shapes without much detail. We are basically outlining things that we can add color, texture and detail too later on.



# MAKING SWIRLS.....

Begin to add in some swirls in the background. Keep the path continuous behind the tree as it is in the foreground. The starry sky is in the background so be sure you draw with the glue so that it appears behind the shapes.



# CARRY ON WITH YOUR SWIRLS AND STARS.....

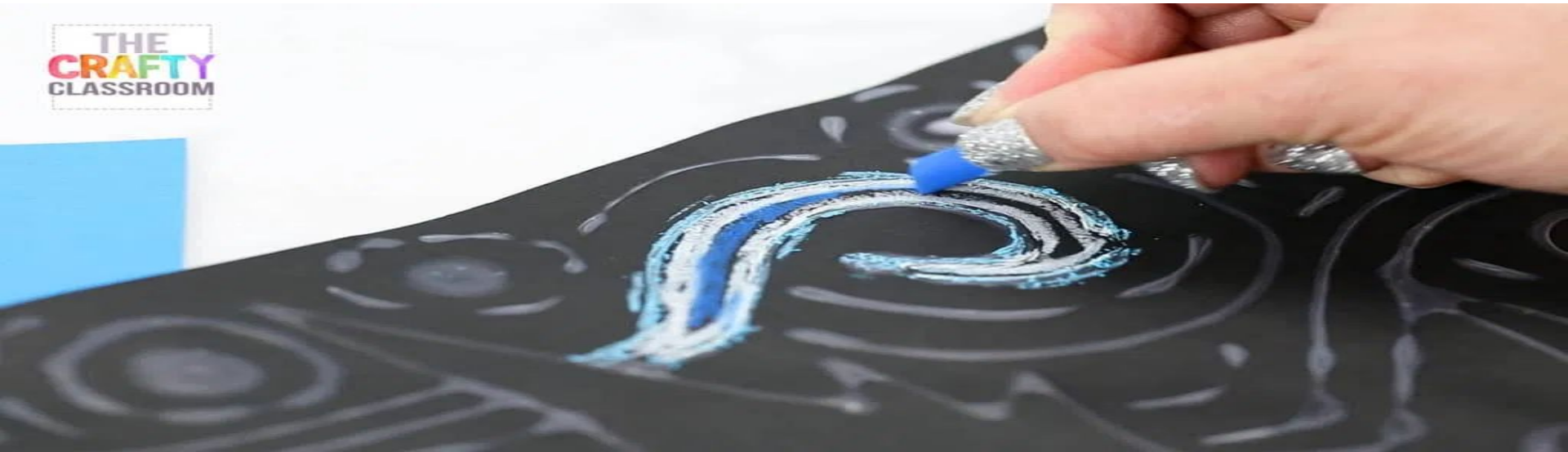
Continue building your image with glue. Make the stars with circles and curved lines moving outwards from them.



# ALLOWING GLUE TO DRY

Allow your glue to dry for a few hours. It will almost disappear but you'll still be able to see it and feel it. When your glue is dry, you can use oil pastels.

THE  
CRAFTY  
CLASSROOM



# PASTEL TIME.....

Use different colors of blue and white along your lines. Show children how to choose a variety of different hues of the same color to create depth and interest.





## ADDING DETAIL.....

Use black and purple to add shadow and depth to the image in the foreground. Black down the left side and purple down the right sides. Overlap the colors a bit in the middle and blend them a little.



# THE FINISHED PRODUCT



# GENERAL KNOWLEDGE QUESTIONS

1. What city in New Zealand am I standing in if I'm standing next to the Beehive?
2. What city in New Zealand am I standing in if I'm standing next to a massive L&P bottle?
3. Name 3 countries that have ONLY have the colors red and white in their flag.
4. Name 3 countries that have more than 5 stars in their flag.
5. What is the longest place name in the world?
6. What country/island am I from if I say hello like this? "Merhaba!"
7. Draw a line to on this equation to make it correct;

$$5 + 5 + 5 + 5 = 555 \quad 5 \underline{\quad} + 5 + 5 = 555$$

8. What is the national emblem for New Zealand?

# RIDDLE ME THIS 😊

**9. *I help you from your head to your toe. The more I work, the smaller I grow  
What am I?"***

**9. *I can fly but have no wings. I can cry but I have no eyes. Wherever I go,  
darkness follows me. What am I?"***

**10. Who is on New Zealand's 100 dollar note?**

**11. How many players on a Rugby Union field?**

**12. If you are number 10 on a Rugby League field, what position do you play?**

**13. What position is "GK" on a netball court?**

**14 In New Zealand where am I standing in if I'm standing next to the Beehive?**

# UNSCRAMBLE ME These words are to do with resilience

ilnceiRee \_\_\_\_\_ Resi

rBvea \_\_\_\_\_ Bra

Craoueg \_\_\_\_\_ Cou

Enracogeu \_\_\_\_\_ Encou

idnK \_\_\_\_\_ k

mtiEon \_\_\_\_\_ Emo

rosePup \_\_\_\_\_ Pur

# TWO EASY TWO INGREDIENT RECIPES

[https://www.youtube.com/watch?v=vrpof\\_QQUe0](https://www.youtube.com/watch?v=vrpof_QQUe0)

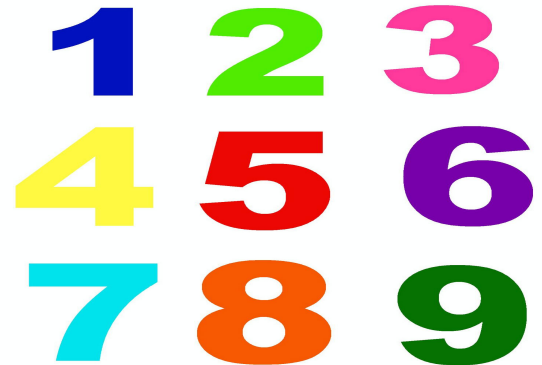


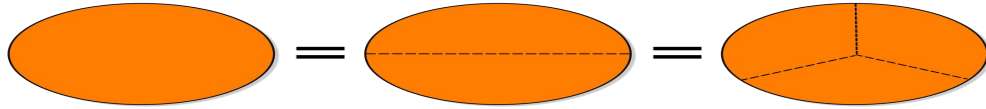
# <https://nzmaths.co.nz/year-4-tasks> MATHS PROBLEMS

Double it The purpose of this task is to help your child to:

- use their knowledge of doubles to 20 to work out other double amounts
- use their doubles to solve addition problems

Doubles are handy facts for your child to know when they are solving maths problems. It is important for them to just know doubles to 20 and to understand the patterns that doubles make. It is also another



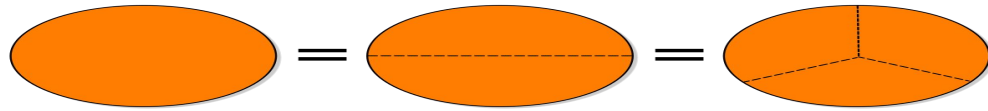


# DOUBLES

Think about these numbers. Write the double of each number in the box. The first is done for you

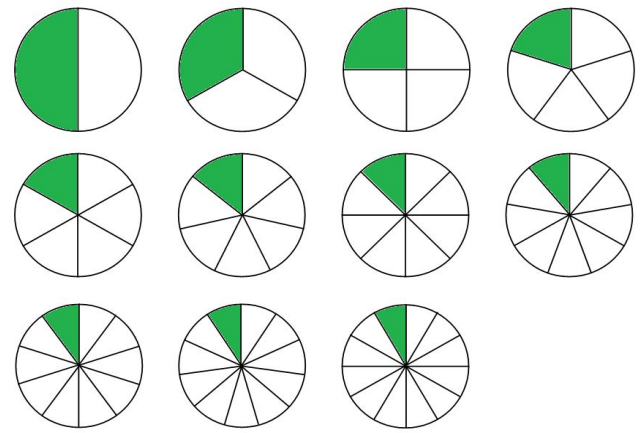
1	2	9
2		
5		
7		
8		





10	80
20	90
50	
70	

HALVE IT

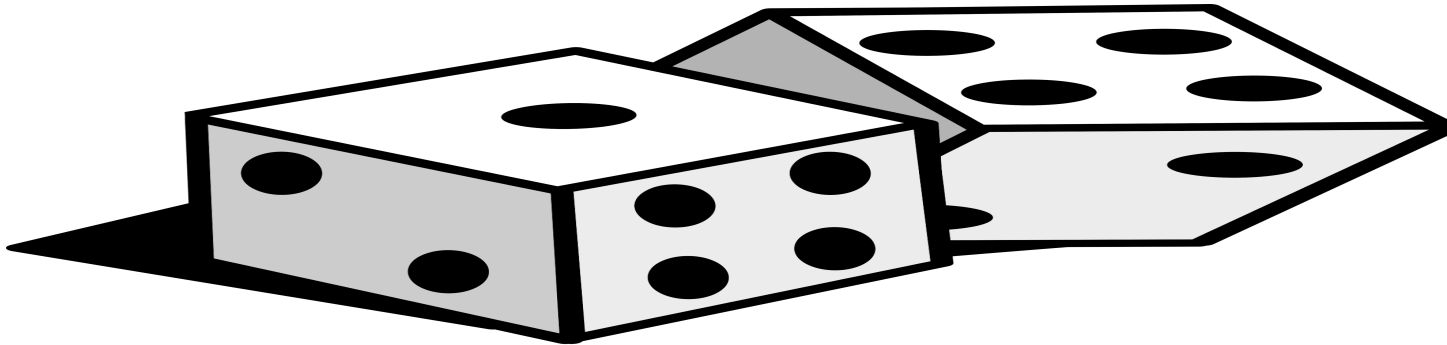


64	32
80	
28	
56	
96	
200	

# BOWL A FACT

You need: at least two players, 3 dice, a pencil and paper for each player

How to play: 1. Each person draws ten circles on their paper and in each circle writes one of the numbers from 1 to 10, like this. 2. Take turns to roll the 3 dice. Using the numbers on the dice and + - x or  $\div$ , make and cross out one of the numbers on your 'skittles'. Write down the equations you used. For example: If you roll 6, 2 and 3, you can say and write down  $6 \times 2 = 12$ , and  $12 - 3 = 9$ , and cross out number 9.



# BOWL A FACT

The challenge becomes greater as more numbers are crossed out. 3. If it is not possible to make any of the remaining numbers, a player passes the dice to another player and awaits their next turn to have another chance to 'bowl a fact.'



# RELATIONSHIPS

Encourage your child to look for and write down as many as they can see

5	30	15	8
6	3	10	20
21	40	4	12
90	60	27	18
7	9		

# SPELLING AND PHONICS

-ock

Lock

stock

Knock

Pock

Shock

Silly sentences

-ook

Look

took.

Shook

mistook,

book,

hook,



# QUICK WRITES



# SPELLING



Keep learning your spelling words from your Essential List. Learn to spell all the new words from the activities I've put on here.

Remember look at the word and sound it out, if you can.

Write it out three to five times

Write your words in sentences or say them in sentences to a partner

Say your words to a partner

At the end of the week spell aloud to a partner or write them down. How many did you get right?





# PEPE GOES WALKING 'E HUAKI ANA TE PEPE'

A hikoi au i te taha o te awa Waiuku. Ka kite ia i te poti Raetihi. Ma te poti raetihi e kawe nga taangata ika ki nga ika. He matakitaki hoki ta te iwi i te whanga o Manukau. e hiahia ana ahau ki te haere i runga i te raetihi engari ki taku kore i tuku ratou i nga kuri kia haere. Ka taea e au te hongu ika i runga i te poti. ko taku whaea me taku papa e hikoi ana i runga i te huarahi te wahi e taea ai e ahau te haunga te haonga o nga kakara reka. ka whakawhiti matou i te rori ka kite i nga tamariki e takaro ana i te piriti I kite ahau i nga whakapakoko Maori. He tohu kei nga whakaahua o nga pakeha me nga tangata maori me nga hitori o te maori kei waiuku. He maha nga tipu aa he taangata ano etahi. He pai ki ahau te hongu i nga tipu me nga putiputi hoki. He pararaiha kuri tenei

# ANCIENT ANCHOR AT TAMAKAE RESERVE



# VIEWING PLATFORM AT TAMAKAE RESERVE



# PHOTOS OF THE HISTORY OF WAIUKU

## RIVER LANE

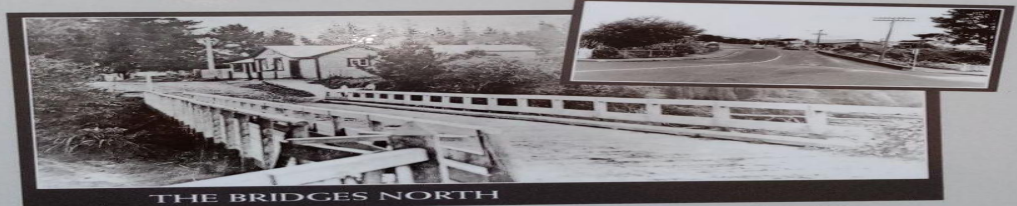


6

### DR TOPP AND HIS INFAMOUS TRIP

Waiuku in 1868 was a real pioneer town. The little house (circled) to the left of the Kentish Hotel is that of Waiuku's illustrious first doctor, George Topp. He had a well known weakness, as one account recalls "he was in a constant state of tightness" ... he liked the grog!

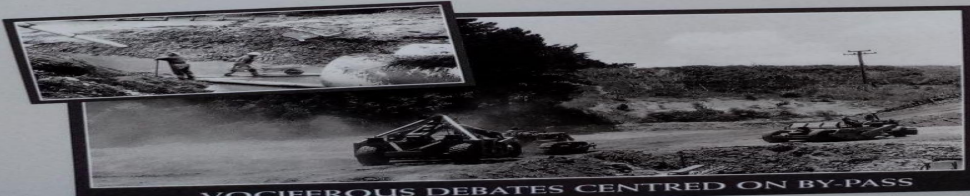
During the land wars of the 1860s, the story goes that the doctor stumbled his blundering way, in intoxication, to the stockade at the top of the town near the police station. Noisily tripping and falling he started a bevy of gun fire from the garrison of sentries protecting the stockade, thinking they were being attacked. It was fortunate that the inebriated Dr Topp tripped and fell as the gun fire rallied over his head.



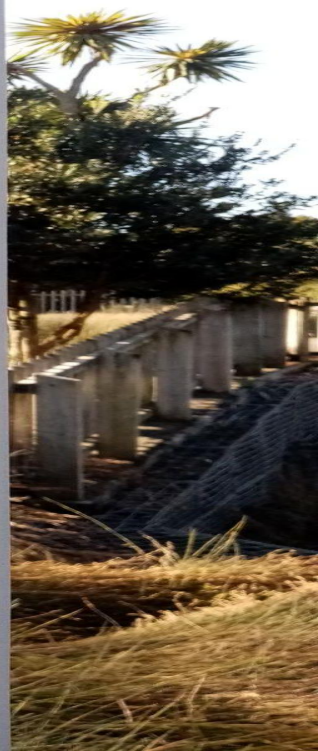
### THE BRIDGES NORTH

There have been two bridges across the Tiware Stream arm of the harbour at Waiuku, until it was reclaimed as part of the King Street bypass project in the 1970s.

This old wooden bridge (built in 1870) allowed access across the river to the Post Office (building shown). Later a concrete bridge was built (inset). The present day Fire Station can be seen on the old Post Office site.



### VOCIFEROUS DEBATES CENTRED ON BY-PASS



# PEPE GOES WALKING

Morena Tamariki ma



I was very lucky the other day as Wahea Nettie and Matua David took me walking down by the Waiuku River. It was a great walk as I got to walk by the Launch the Raetihi. The Raetihi takes people fishing and on sightseeing on the Manukau Harbour. Mum and dad then took me up the path and down the path, then across the road. Across the road I saw Maori totem poles. I saw children playing on the bridge with their whanau. I get to smell lots of different plants and flowers. There's a sign there with photos of both Maori and pakeha, who helped grow Waiuku into a great little town. This is a doggy paradise!

# TE WHAKAPAKOKO TAMAKAE I WAIUKU

## THE STATUE OF TAMAKAE



# MAORI LEGEND AROUND THE NAMING OF WAIUKU

Waiuku was an ancient Maori port between the Waikato River and the Manukau Harbour. During the Waikato War (1863–64), Waiuku became a frontier town guarded by a blockhouse. ... The accepted meaning of “Waiuku” is **muddy or discoloured waters**. Tamakou was the first to meet her, but she asked that Tamakae be presented to her. He was working in the kumara gardens and had to be washed in the wai (water) and uku (a particular type of mud) at the stream that flows into the Manukau Harbour just behind the Waiuku Museum, before he was able to meet her. Tamakae won her heart and married her. From then the place was named Waiuku.

# HISTORY OF PUKEKOHE

If you're not from /waiuku, then here's a link to look up the history of pukekohe. You can also ask your whanau what tribe they are from and you may wish to write about your whanua whenua.

Meaning of place name

Puke: hill; kohe: native tree. Many of these trees grew in the district.





# PUKEKOHE EAST CHURCH....ancient times



# PUKEKOHE EAST CHURCH.....modern times



# PUKEKOHE

What is your favourite place to visit in Pukekohe?

Who do you go to Pukekohe with?

What is the main reason that you go to Pukekohe?

Where do you do your shopping? Is it in Pukekohe?

Have you taken the train from Pukekohe?

Have you taken the bus to Pukekohe?

